

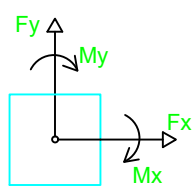
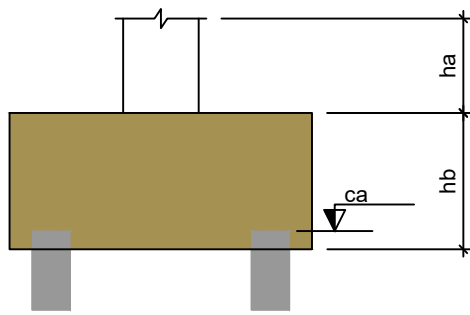
Planta de localização das estacas

escala 1:50

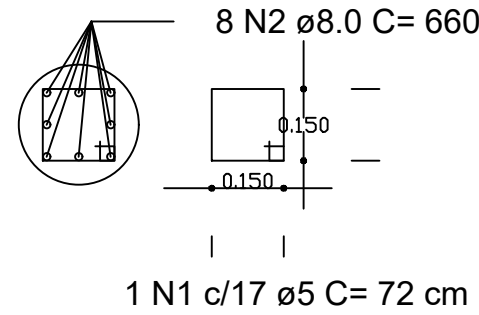
Nome	Seção (cm)	X (cm)	Y (cm)	Carga Máx. (tf)	Carga Mín. (tf)	Pilar				Fundação				Bloco		Base tub. (cm)	
						Mx Máximo (kgf.m)		My Máximo (kgf.m)		Fx Máximo (tf)		Fy Máximo (tf)		Lado B (cm)	Lado H (cm)		h1 / hb (cm)
						Positivo	Negativo	Positivo	Negativo	Positivo	Negativo	Positivo	Negativo				
P1	30x30	15.00	3425.00	4.3	3.1	0	0	0	0	0.0	-0.4	0.3	0.0	150	60	40	65 2 C20 -90
P2	20x45	180.00	3417.50	4.2	3.9	0	0	0	0	0.3	-0.4	0.0	-0.2	150	60	40	55 2 C20 -80
P3	20x45	330.00	3417.50	5.1	5.0	0	0	0	0	0.5	-0.1	0.3	0.0	150	60	40	55 2 C20 -80
P4	20x45	480.00	3417.50	3.9	3.6	0	0	0	0	0.3	-0.4	0.0	-0.2	150	60	40	55 2 C20 -80
P5	20x45	630.00	3417.50	3.7	3.7	0	0	0	0	0.3	-0.2	0.0	-0.2	150	60	40	55 2 C20 -80
P6	20x45	780.00	3417.50	4.5	4.2	0	0	0	0	0.2	-0.3	0.0	-0.2	150	60	40	55 2 C20 -80
P7	20x45	950.00	3417.50	2.9	2.0	0	0	0	0	0.4	0.0	0.0	0.0	150	60	40	55 2 C20 -80
P8	20x45	22.50	3265.00	4.1	4.0	0	0	0	0	0.1	0.0	0.1	0.0	150	60	40	55 2 C20 -80
P9	30x30	480.00	3265.00	0.1	0.3	0	0	0	0	0.1	0.0	0.1	-0.2	60	60	40	65 1 C20 -90
P10	30x30	780.00	3265.00	0.1	-0.2	0	0	0	0	0.1	0.0	0.3	0.0	150	60	40	65 2 C20 -90
P11	20x45	22.50	3110.00	5.3	5.0	0	0	0	0	0.0	-0.3	0.0	-0.2	150	60	40	55 2 C20 -80
P12	20x45	22.50	2955.00	4.6	3.1	0	0	0	0	0.1	0.0	0.1	0.0	150	60	40	55 2 C20 -80
P13	30x30	180.00	2955.00	1.0	-0.6	0	0	0	0	0.6	-0.5	0.1	0.0	150	60	40	65 2 C20 -90
P14	20x45	22.50	2800.00	3.9	3.8	0	0	0	0	0.2	0.0	0.1	0.0	150	60	40	55 2 C20 -80
P15	20x45	22.50	2645.00	4.8	3.5	0	0	0	0	0.1	0.0	0.1	0.0	150	60	40	55 2 C20 -80
P16	30x30	180.00	2645.00	0.7	-0.7	0	0	0	0	0.3	-0.6	0.1	0.0	150	60	40	70 2 C20 -95
P17	20x45	22.50	2490.00	3.9	3.8	0	0	0	0	0.2	0.0	0.1	0.0	150	60	40	55 2 C20 -80
P18	20x45	22.50	2335.00	4.8	3.5	0	0	0	0	0.1	0.0	0.1	0.0	150	60	40	55 2 C20 -80
P19	30x30	180.00	2335.00	0.7	-0.7	0	0	0	0	0.4	-0.6	0.1	0.0	180	60	40	70 2 C20 -95
P20	20x45	22.50	2180.00	3.9	3.8	0	0	0	0	0.2	0.0	0.1	0.0	150	60	40	55 2 C20 -80
P21	20x45	22.50	2025.00	4.8	3.5	0	0	0	0	0.1	0.0	0.1	0.0	150	60	40	55 2 C20 -80
P22	30x30	180.00	2025.00	0.7	-0.7	0	0	0	0	0.4	-0.6	0.1	0.0	150	60	40	65 2 C20 -90
P23	20x45	22.50	1870.00	3.9	3.8	0	0	0	0	0.2	0.0	0.1	0.0	150	60	40	55 2 C20 -80
P24	20x45	22.50	1715.00	4.8	3.5	0	0	0	0	0.1	0.0	0.1	0.0	150	60	40	55 2 C20 -80
P25	30x30	180.00	1715.00	0.7	-0.7	0	0	0	0	0.4	-0.6	0.1	0.0	180	60	40	70 2 C20 -95
P26	20x45	22.50	1560.00	3.9	3.8	0	0	0	0	0.2	0.0	0.1	0.0	150	60	40	55 2 C20 -80
P27	20x45	22.50	1405.00	4.8	3.5	0	0	0	0	0.1	0.0	0.1	0.0	150	60	40	55 2 C20 -80
P28	30x30	180.00	1405.00	0.7	-0.7	0	0	0	0	0.4	-0.6	0.1	0.0	150	60	40	65 2 C20 -90
P29	20x45	22.50	1250.00	3.9	3.8	0	0	0	0	0.2	0.0	0.1	0.0	150	60	40	55 2 C20 -80
P30	20x45	22.50	1095.00	4.8	3.5	0	0	0	0	0.1	0.0	0.1	0.0	150	60	40	55 2 C20 -80
P31	30x30	180.00	1095.00	0.7	-0.7	0	0	0	0	0.4	-0.6	0.1	0.0	180	60	40	70 2 C20 -95
P32	20x45	22.50	940.00	3.9	3.8	0	0	0	0	0.2	0.0	0.1	0.0	150	60	40	55 2 C20 -80
P33	20x45	22.50	785.00	4.8	3.5	0	0	0	0	0.1	0.0	0.1	0.0	150	60	40	55 2 C20 -80
P34	30x30	180.00	785.00	0.7	-0.7	0	0	0	0	0.3	-0.6	0.1	0.0	180	60	40	70 2 C20 -95
P35	20x45	22.50	630.00	3.9	3.8	0	0	0	0	0.2	0.0	0.1	0.0	150	60	40	55 2 C20 -80
P36	20x45	22.50	475.00	4.6	3.2	0	0	0	0	0.1	0.0	0.1	0.0	150	60	40	55 2 C20 -80
P37	30x30	180.00	475.00	1.0	-0.5	0	0	0	0	0.6	-0.5	0.1	0.0	150	60	40	65 2 C20 -90
P38	20x45	22.50	320.00	5.2	5.0	0	0	0	0	0.0	-0.3	0.2	0.0	150	60	40	55 2 C20 -80
P39	20x45	22.50	165.00	4.0	3.9	0	0	0	0	0.1	0.0	0.1	-0.2	150	60	40	55 2 C20 -80
P40	30x30	480.00	165.00	0.3	0.1	0	0	0	0	0.1	0.0	0.1	-0.1	60	60	40	65 1 C20 -90
P41	30x30	780.00	165.00	0.1	-0.2	0	0	0	0	0.1	0.0	0.0	-0.4	150	60	40	65 2 C20 -90
P42	30x30	15.00	15.00	4.2	3.0	0	0	0	0	0.0	-0.4	0.0	-0.2	150	60	40	65 2 C20 -90
P43	20x45	180.00	22.50	4.2	3.9	0	0	0	0	0.3	-0.4	0.1	0.0	150	60	40	55 2 C20 -80
P44	20x45	330.00	22.50	5.1	4.9	0	0	0	0	0.5	-0.1	0.0	-0.3	150	60	40	55 2 C20 -80
P45	20x45	480.00	22.50	3.9	3.6	0	0	0	0	0.3	-0.4	0.0	-0.2	150	60	40	55 2 C20 -80
P46	20x45	630.00	22.50	3.7	3.7	0	0	0	0	0.3	-0.2	0.1	0.0	150	60	40	55 2 C20 -80
P47	20x45	780.00	22.50	2.6	2.2	0	0	0	0	0.2	-0.3	0.1	0.0	150	60	40	55 2 C20 -80
P48	20x45	950.00	22.50	2.9	2.0	0	0	0	0	0.4	0.0	0.1	0.0	150	60	40	55 2 C20 -80

Os esforços indicados nesta tabela são os valores máximos obtidos pela envoltória de todas as combinações definidas para as fundações. Para análises complementares, deve-se consultar o relatório de esforços na fundação, que apresenta os valores calculados para cada combinação.

Simbologia	Estacas		Quantidade
	Nome	d (cm)	
	C20	30.00	94



94x E1
escala 1:25



94xE1

Relação do aço						
AÇO	N	DIAM (mm)	QUANT	C.UNIT (cm)	C.TOTAL (cm)	
CA60	1	5.0	3290	72	236880	
CA50	2	8.0	752	660	496320	

Resumo do aço

AÇO	DIAM (mm)	C.TOTAL (m)	PESO + 10 % (kg)
CA60	5.0	2368,80	401,28
CA50	8.0	4963,00	2156,51
PESO TOTAL (kg)			
CA60	401,28		
CA50	2156,51		

Volume de concreto (C-30) = 27.26 m³

		PREFEITURA MUNICIPAL DE BANDEIRANTES SECRETARIA MUNICIPAL DE OBRAS E SERVIÇOS URBANOS	
PROJETO ESTRUTURAL MURO DE ARRIMO CENTRO DE FISIOTERAPIA			
OBRA: MURO DE ARRIMO Prefeitura Municipal de Bandeirantes	ARQUIVO: CF_LOC_EST	ESCALA: INDICADA	
ÁREAS: -Área total = 430,29m²	DESENHISTA: Luis Felipe Zangarolimbo Liberato	FORMATO: DWG	
REFERÊNCIA: PROJETO ESTRUTURAL MURO DE ARRIMO CENTRO DE FISIOTERAPIA			
ENDEREÇO: Rua São Paulo, S/N - Loteamento Moretti, Bandeirantes - PR, 86360-000 MAIO / 2024			
Taxa de Ocupação:			
Coeficiente de Aproveitamento:			
Taxa de Permeabilidade:			
RESPONSÁVEL TÉCNICO		PROPRIETÁRIO	
		FOLHA: 02/07	